

Tourist itinerary – Sightseeing tour

Town of Santa Cruz | 5km

This journey explores the various panoramic of the city, by walking through the city center, its seaside and its main sights without forgetting places that surprise us by its history and surroundings. We suggest that the route begins at Rua Bela de São José in

- 1. Quinta do Revoredo - Casa da Cultura de Santa Cruz**, the culture center, property mid-nineteenth century, which was the summer residence of the English Blandy family, with a beautiful garden where we can find architectural remnants of the sixteenth century, from the former Convent of Our Lady of Mercy - Convento de Nossa Senhora da Piedade - (which existed where the airport currently is), and where we can enjoy the views across the sea front of the city. Right behind is the public library
- 2. Biblioteca Municipal de Santa Cruz** and beside, the Chapel
- 3. Capela de Santo Amaro**, the protector of the tumultuous waters (sea and alluvium). By continuing to the east, go through the way
- 4. Caminho do Real**, now Rua Bela de S. José, to the WWTP (wastewater treatment plant), go down the stairway to the Beach Promenade
- 5. Promenade da Praia das Palmeiras** and turn right. Keep your way by the sea towards the center of Santa Cruz until
- 6. Zona Balnear da Praia das Palmeiras**, bathing area, beach with traditional pebble stones and its seawater pools. Here you will find
- 7. 'A Terra e o Mar'** - 'The Earth and the Sea', a bronze sculpture of the Portuguese artist and sculptor Lagoa Henriques. Carry on along the Promenade you will come to the
- 8. Municipal Market Santa Cruz - Mercado Municipal de Santa Cruz**, in modern language, designed by the architect Luís da Conceição Teixeira and opened in 1962. Go around the building and go up the street Rua do Ribeirinho until
- 9. the Court of Santa Cruz building - Tribunal de Santa Cruz** (Former Town Hall of Santa Cruz), surrounded by gardens where you can admire trees such as Sumaúmas, Jacarandás, Dragon Trees and Plumerias / pines. Keep going up to the intersection with
- 10. the street Rua da Rochinha**, and turn left; you will find the
- 11. Flour Mill - Moínho da Rochinha**, next to which there is a path
- 12. Vereda da Rochinha**. Climb the stairway, passing over the tunnel of the Airport Road until the end where you will reach
- 13. the street pathway - Impasse da Estrada do Miradouro**- until you find on the left, the pathway
- 14. Miradouro da Rochinha**, viewpoint, 150 meters above sea level, where you can enjoy an urban panoramic view over Santa Cruz. Back to the course, continue to climb to the viewpoint of the Road
- 15. Estrada do Miradouro**. A little further on, turn right and start the descent by the way called
- 16. Caminho Dona Mécia**; its steep slope may represent an obstacle for some people, but if you prefer you can alternatively go to the road Estrada do Miradouro until the end, and then continue by the way Caminho da Ribeira; going down the path Dona Mécia; on the right you will reach
- 17. the mil 'Moínho do Entrudo'** and in the end
- 18. the mansion-house 'Solar Dona Mécia'**, a building of the eighteenth century, transformed into a hotel. Follow the route back towards the city center through
- 19. Vereda da Ribeira**; on the left you can see
- 20. Quinta Grant**, with its characteristic chimney / rectangular dovecote and at the end of the path you will find the building
- 21. Holy House of Mercy of Santa Cruz - Santa Casa da Misericórdia de Santa Cruz**; the Parish Hall - **Salão Paroquial** and the Chapel of Santa Isabel - **Capela de Santa Isabel**, (initial construction of the XVI century and modified in the XVIII century), whose rehabilitation project fell to architect Victor Mestre. This property also runs a daycare centre (Centro de Dia de Santa Cruz). Ahead you can visit
- 22. the Motherchurch of Santa Cruz - Igreja Matriz de Santa Cruz** - Church of the Savior, a real estate ranked from the beginning of the sixteenth century, built in the likeness of Funchal Cathedral, with three naves with the chancel of ribbed vault. In this chapel we can see an interesting stone-border door and the tomb slab of the founder of the village of Santa Cruz,

João de Freitas. To the west, and next to the main entrance of the church, don't miss the opportunity to visit the

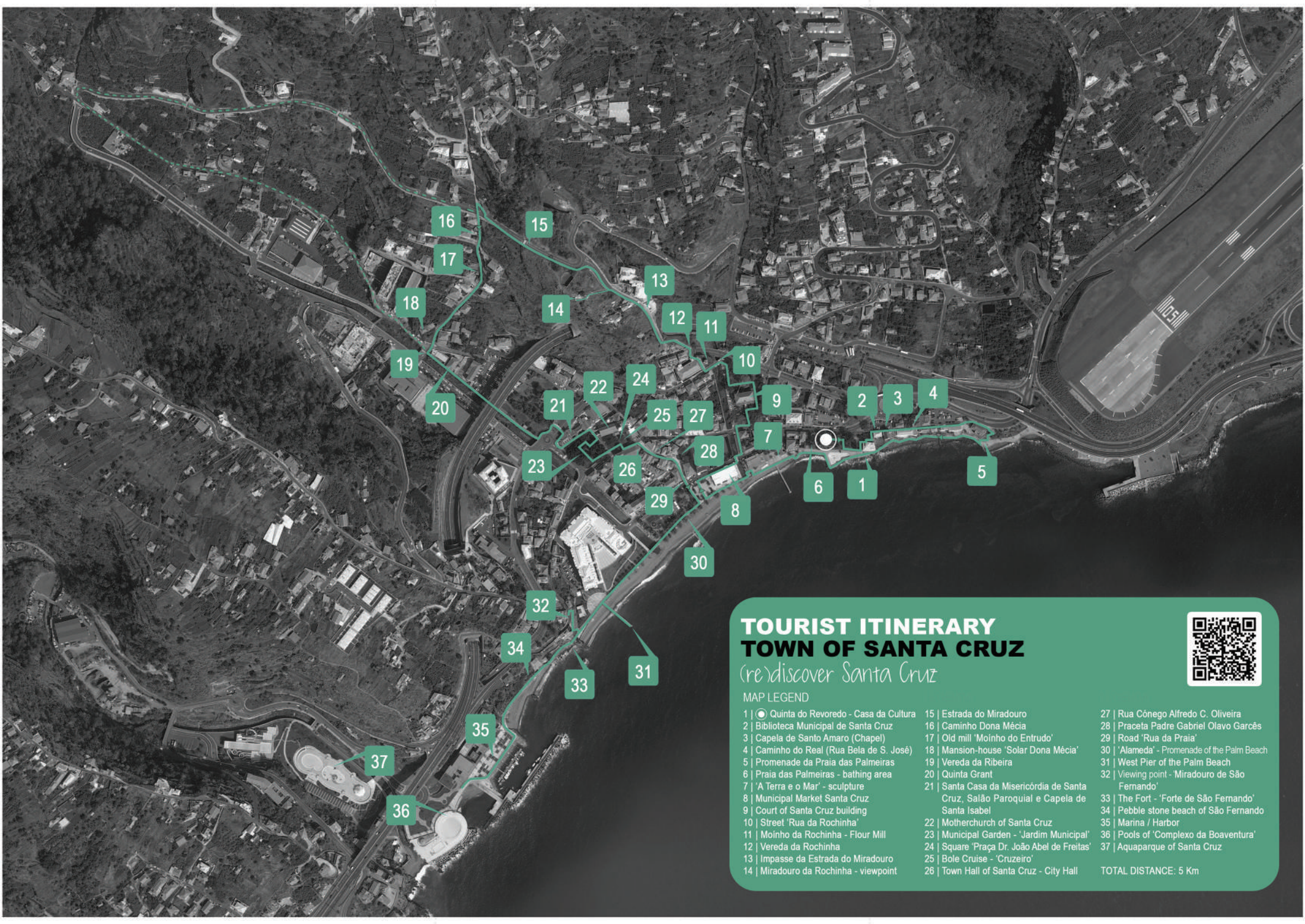
- 23. Municipal Garden - Jardim Municipal**, with its core emblematic endemic trees – tilde, and the sculpture of Sister Mary Jane Wilson, from the sculptor Luís Paixão. Follow the path to the east, to the
- 24. Square Praça Dr. João Abel de Freitas**, paved in cobblestones enhanced shingle with its
- 25. Bole Cruise - Cruzeiro** - from the sixteenth century and the upper end of the pillar from the XIX century. To the south there is the building of the
- 26. Town Hall of Santa Cruz - City Hall - Câmara Municipal**, a National Monument with portal and Manueline windows of the early sixteenth century, probably recovered from the original building undergoing an expansion to the east in the early 70s of XX century. Follow eastwards and on the right go down the street
- 27. Rua Cónego Alfredo C. Oliveira**, enjoy the houses, the bowers and robust corallines in the
- 28. small square Praceta Padre Gabriel Olavo Garcês**; from here, continue south and cross to
- 29. the road Rua da Praia** up to
- 30. the alley Alameda**, which takes up the Promenade of the Palm Beach towards the west. In front of Vila Gale Hotel you can go through
- 31. West Pier of the Beach - Cais Poente da Praia das Palmeiras** or climb the stairs at the rock to the
- 32. Viewing point Miradouro de São Fernando**, with its magnificent view to the east, over the beach Praia das Palmeiras and the head of the Madeira International Airport. Right next to it there is
- 33. the Fort - Forte de São Fernando**, secular military building, for defense against attacks by pirates and corsairs, next to which there is a large Araucaria, with almost 40 meters high. Return to the Promenade and continue west, going through
- 34. the beach or the Pebble stone beach - Praia ou Calhau de São Fernando**, where monk seals (Mediterranean monk seal - *Monachus monachus*) from the colony of Natural Reserve of the Desert Islands are often seen swimming and even sunbathing on the pebble stones. By the end of route you will find
- 35. Marina / Harbor** as well as
- 36. Pools of Complexo da Boaventura**. In the summer you can also enjoy the Aquapark attractions in the
- 37. Aquaparque of Santa Cruz.**

This route through the city of Santa Cruz assumes takes very different forms depending on the time of day or the season in which it is covered, and is even safe for an overnight journey.



TOURIST ITINERARY TOWN OF SANTA CRUZ

(re)discover Santa Cruz



TOURIST ITINERARY TOWN OF SANTA CRUZ

(re)discover Santa Cruz



MAP LEGEND

- | | | |
|--|---|---|
| 1 ● Quinta do Revovedo - Casa da Cultura | 15 Estrada do Miradouro | 27 Rua Cónego Alfredo C. Oliveira |
| 2 Biblioteca Municipal de Santa Cruz | 16 Caminho Dona Mécia | 28 Praceta Padre Gabriel Olavo Garcês |
| 3 Capela de Santo Amaro (Chapel) | 17 Old mill 'Moinho do Entrudo' | 29 Road 'Rua da Praia' |
| 4 Caminho do Real (Rua Bela de S. José) | 18 Mansion-house 'Solar Dona Mécia' | 30 'Alameda' - Promenade of the Palm Beach |
| 5 Promenade da Praia das Palmeiras | 19 Vereda da Ribeira | 31 West Pier of the Palm Beach |
| 6 Praia das Palmeiras - bathing area | 20 Quinta Grant | 32 Viewing point - Miradouro de São Fernando' |
| 7 'A Terra e o Mar' - sculpture | 21 Santa Casa da Misericórdia de Santa Cruz, Salão Paroquial e Capela de Santa Isabel | 33 The Fort - 'Forte de São Fernando' |
| 8 Municipal Market Santa Cruz | 22 Motherchurch of Santa Cruz | 34 Pebble stone beach of São Fernando |
| 9 Court of Santa Cruz building | 23 Municipal Garden - 'Jardim Municipal' | 35 Marina / Harbor |
| 10 'Street' 'Rua da Rochinha' | 24 Square 'Praça Dr. João Abel de Freitas' | 36 Pools of 'Complexo da Boaventura' |
| 11 Moinho da Rochinha - Flour Mill | 25 Bole Cruise - 'Cruzeiro' | 37 Aquaparque of Santa Cruz |
| 12 Vereda da Rochinha | 26 Town Hall of Santa Cruz - City Hall | |
| 13 Impasse da Estrada do Miradouro | | |
| 14 Miradouro da Rochinha - viewpoint | | |

TOTAL DISTANCE: 5 Km